

Building stronger communities through Integrated Community Care

Vancouver – Canada
2 – 4 // Oct // 2019



Transnational Forum on Integrated Community Care

3rd Transnational Conference on Integrated Community Care

Building stronger communities through Integrated Community Care

2 October 2019

SFU Goldcorp Centre for the Arts, 149 W Hastings St

3-4 October 2019

SFU Harbour Centre Campus, 515 W Hastings St

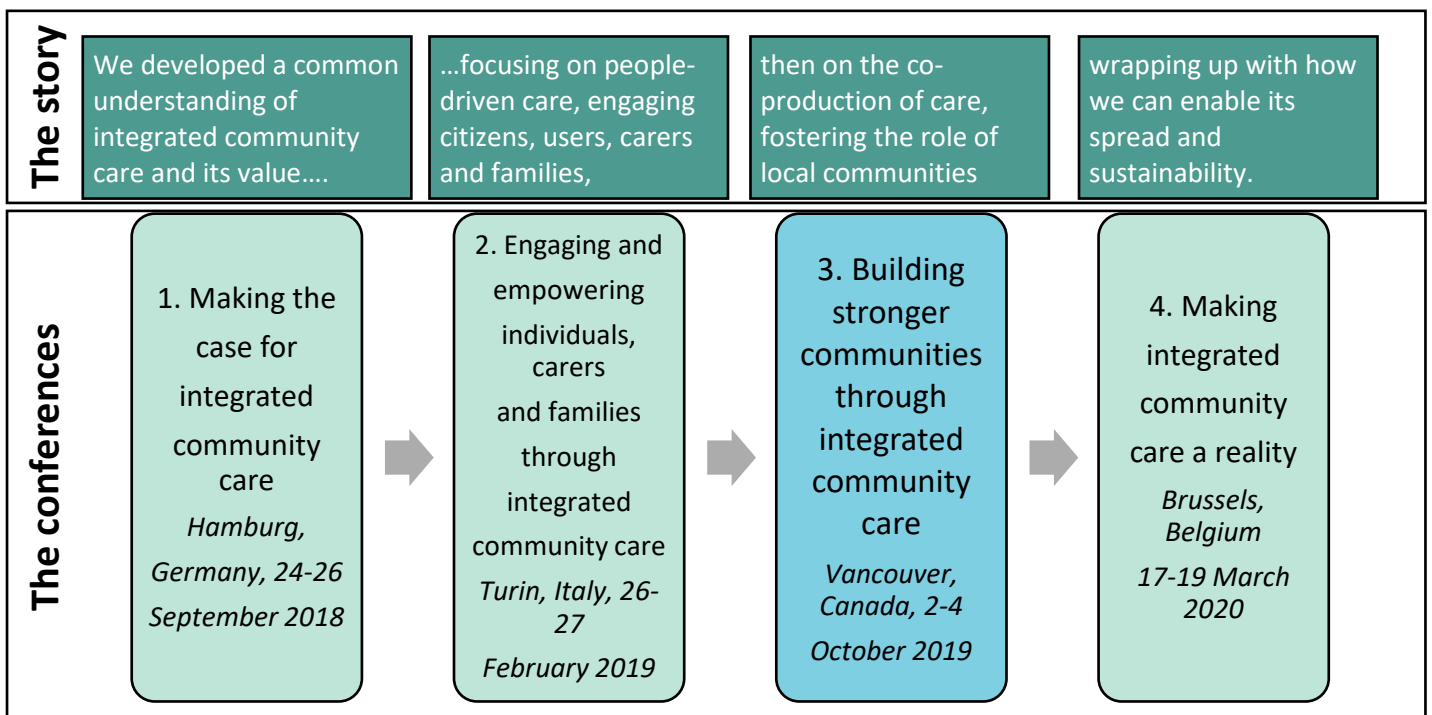
Vancouver, Canada

Background

The Transnational Forum on Integrated Community Care (TransForm) is a joint initiative of Foundations in and beyond Europe that aims to inspire and mobilise policy-makers and practitioners to foster integrated community care (ICC).

Through a series of four conferences, TransForm is exploring the undoubted potential this new and diffuse concept of integrated community care presents. ICC is an approach that seeks to improve quality of care and quality of life by building strong communities and engaging people as co-producers of health, starting with local needs and resources. ICC requires new cross-sectoral and interdisciplinary partnerships to be formed between all the relevant local stakeholders: citizens' initiatives, voluntary networks, caring neighbourhoods, health and social care services, local associations, schools, third sector, social entrepreneurs and local authorities.

The diagram below illustrates the story TransForm is telling and the series conferences that help us understand how ICC can become a reality.



Aims and objectives of the 3rd Conference on Integrated Community Care

Communities can influence our health and wellbeing in many ways, including (among many):



Social networks and relationships **reduce isolation** and improve people's **resilience**



Social cohesion gives people a sense of **belonging & of equality**



Civic engagement or participation gives people a **sense of purpose and identity**



Place based governance for comprehensive solutions. **Local governance** helps to build **trust** and a sense that people can **influence change**

Figure 1 Based on a combination of the Glasgow Centre for Population Health Report on Social Contexts and Health and the Marmot Review¹

The capacity of local communities to deal with public health issues and care needs of community members over their course of life depends both on the ability of communities to define and organise themselves, and on the extent to which local, regional and national actors are willing to foster community-driven care and to invest in place-based initiatives. Social or community capital needs to be built at a local level to ensure that policies are drawn on and owned by those most affected and are shaped by their experiences. This conference will therefore examine how to enable the participation and empowerment of communities in decision-making, including how to respond to different cultural contexts. The conference will also offer insights on how to bring local policymakers on board.

The conference main learning objectives are to:

1. Demonstrate through evidence and practical experiences the **positive impact that community engagement and empowerment can have on improving people's health and wellbeing**, including addressing social determinants of health;
2. Understand the options and processes by which local communities can participate meaningfully in **local decision-making and governance processes** to support integrated community care, including the creation and maintenance of new forms of partnerships and alliances, and the challenges and issues to developing a shared purpose to making a success of this;
3. Explore **how to mobilise policy makers and community leaders** to take the lead towards system transformation through community-led collaborative approaches;
4. Demonstrate how **evaluation and research** can support the design and deployment of community-based approaches that enable ICC; and
5. Generate further **inspiration and confidence to develop and change practice** that values and encourages the role of the community at all levels: sectors, countries, communities, organisations and individuals.

¹ Marmot review: www.instituteofhealthequity.org/resources-reports/fair-society-healthy-lives-the-marmot-review/fair-society-healthy-lives-full-report-pdf.pdf

GCPH report: [www.gcph.co.uk/assets/0000/5594/Social contexts and health web .pdf](http://www.gcph.co.uk/assets/0000/5594/Social_contexts_and_health_web_.pdf)

AGENDA

DAY 1 – SFU Goldcorp Centre for the Arts, 149 W Hastings St, Vancouver

12:00	Arrival, registration and lunch
-------	--

Session 1: Implementing Integrated Community Care

Objective: To understand the essential elements and approaches of decision making processes and governance that facilitate the creation of new forms of alliances and successful community participation

13:00	Indigenous Territory Acknowledgement <i>Stewart Gonzalez, Squamish Nation – Ayas Menmen Child & Family Services</i>
13:10	Welcome to the conference <i>Ian Boeckh, President and Director Graham Boeckh Foundation</i>
13:20	Ministerial welcome <i>The Honorable Adrian Dix, Minister of Health, British Columbia (tbc)</i>
13:30	Getting everyone on the same page – learnings from the first two conferences and outline of this third conference <i>Natasha Walker, lead facilitator, and Toni Dedeu, Interim CEO IFIC</i>
13:50	Leaders in unexpected places – a young person’s perspective <i>Alicia Raimundo, mental health advocate and Andrea Vukobrat, youth peer support coordinator</i>
14:05	Key note – how partnerships with community organisations can lead to true system transformation (lessons learnt from Foundry experience) <i>Steve Mathias, Executive Director, Foundry and Tanya Behardien, Executive Director of OneSky Community Resources</i>
14:35	Overview of the Canadian health and social care system – a Talk with <ul style="list-style-type: none"> • <i>Ted Patterson, Assistant Deputy Minister of Primary and Community Care</i> • <i>Dr Evan Adams, Chief Medical Officer at First Nations Health Authority</i>
15:20	Break
15:50	Citizen and community leaders panel discussion – illustrating their strategic role in service development <ul style="list-style-type: none"> • <i>Alicia Raymundo, mental health advocate</i> • <i>Simon Courtemanche, The Aire ouverte project in Laval</i> • <i>Stewart Gonzalez, Squamish Nation – Ayas Menmen Child & Family Services</i> • <i>Liza Bautista, Manager, Settlement Employment programs, ISS of BC</i>
16:50	Plenary discussion on the learnings of the day <i>Natasha Walker, lead facilitator</i>
17:20	Preparing for the site visits <i>First flavour of what to expect from the visits of local promising practices</i>
18:00	<i>End of day 1</i>
19:00	Dinner at Steamworks, 375 Water St, Vancouver

DAY 2 – SFU Harbour Centre Campus, 515 W Hastings St, Vancouver

Session 2: Demonstrate the positive impact of ICC approaches through evidence and practical experiences

Objective: To demonstrate how ICC can improve population health and wellbeing, including address social determinants of health through established case examples

From 07:15	Breakfast at the Coast Coal Hotel (Grouse Room), 1180 West Hastings
08:30	Travel to site visits – departure from Coast Coal Hotel, 1180 West Hastings
09:00	<p>Site Visits <i>Delegates visit local examples to learn how promising practices in integrated community care have sought to engage and empower communities</i></p> <p>Foundry site visit 1 and 2 <i>Krista Gerty, Director Community Development and Central Operations</i> Representing community agencies, government, donors, youth and young adults, and families coming together to improve the wellness of BC’s young people. https://foundrybc.ca</p> <ol style="list-style-type: none"> Foundry Vancouver Granville, 1260 Granville St. <i>Malcolm Jenkins, Manager, Inner City Youth Program & Foundry Vancouver Granville</i> Foundry North Shore, 213 W 1st St, North Vancouver <i>Terry Bulych, Team Leader, Youth, Mental Health & Substance Use and Julie Zimmerman, Manager, North Shore Youth Mental Health and Substance Use & Foundry North Shore</i> Vancouver Native Health Society, 449 E Hastings St <i>Chelsea Bowers, Elders Programme Coordinator and Helena Fleming, Medical Clinic Manager</i> Established in 1991 to address the lack of healthcare for urban Indigenous people in Greater Vancouver, with a mission to improve and sustain the physical, mental, emotional and spiritual health of individuals. www.vnhs.net PosAbilities – Kudoz programme, Suite 240-4664 Lougheed Hwy, Burnaby <i>Gord Tulloch, Director of Innovation and Janey Roh, Culture Lead, Kudoz</i> An award winning community learning platform. It connects people with and without developmental disabilities to novel experiences in their city. http://kudoz.ca/ Immigrant Services Society of BC (ISSofBC) <i>Liza Bautista, Manager, Job Quest & TechWomen programs and Jennifer York, Division Manager, ISSofBC Settlement Program</i> Providing a supportive environment for newcomers to Canada of all backgrounds since 1972. https://issbc.org/welcome-centre
11:00	Travel back to venue SFU Harbour Centre Campus, 515 W Hastings St
11:45	Summary and key lessons learnt from the site visits
12:40	Introduction to Mini-Hackathon-topics <i>Natasha Walker, lead facilitator</i>
12:45	Group photo and Lunch

14:00	Key note – Relationship-based Health Care <i>Fiona Dalton, President and CEO of Providence Health Care</i>
14:30	On Truth and Reconciliation <i>Leslie Varley, BC Association of Aboriginal Friendship Centres and Jennifer Johnstone, CE Central City Foundation</i>
14:50	Case study presentations 3 cases will represent key strategies and how they can be implemented: <ul style="list-style-type: none"> • Southcentral Foundation, the Nuka System of Care, Alaska, USA <i>April Kyle, VP of Behavioral Health Services, and Tom Mitchell, Senior Learning and Development Advisor</i> • Caring Community Project <i>Antoine Boivin, Co-Director and Head of Research, and Ghislaine Rouly, Citizen Partner, Centre of Excellence on Partnership with Patients and the Public</i>
15:30	Break
16:00	Case study presentations continued <ul style="list-style-type: none"> • Compassionate Communities Canada <i>Bonnie Tompkins, Compassionate Communities National Lead and Jon Faulkner, VP Operations, Pallium Canada</i>
16:20	Plenary discussion on the 3 case studies and key messages from the day <i>Reps of 3 case studies, Jodeme Goldhar and Tom Braes, TransForm Advisory Group</i>
17:20	<i>End of day 2</i>
19:00	Dinner at Coast Restaurant, 1054 Alberni St, Vancouver

DAY 3 - SFU Harbour Centre Campus, 515 W Hastings St, Vancouver

Session 3: Ensuring that everyone can voice their ideas in their communities

Objectives: To reflect on how to use developmental evaluation as a tool for systems transformation and to generate further inspiration and confidence to develop and change practice at all levels: sectors, countries, communities, organisations and individuals.

08:00	Arrival and breakfast at SFU Harbour Centre Campus
09:00	Welcome to the final morning <i>The Honorable Judy Darcy, Minister of Mental Health and Addictions</i>
09:10	Overview of the day <i>Natasha Walker, lead facilitator</i>
09:20	Workshop on developmental evaluation as a tool for systems transformation <i>Developmental evaluation is an evaluation approach used to assist innovators developing change initiatives in complex and uncertain environments</i> <i>Amy Salmon, Developmental evaluator, Program Head, Centre for Health Evaluation & Outcomes Sciences</i>
10:30	Break
10:50	Mini ‘Hackathon’ on Key Challenges with engaging and empowering communities <i>Mini hackathon on 3-4 key challenges & ideas developed throughout day 2 (based on, but not limited to the case-studies)</i>
12:30	Lunch

Session 4: Fostering strategic learning

Objective: To reflect on how to get local policymakers on board to take ICC forward in different contexts

13:20	<p>Mobilising local policymakers and community leaders – fishbowl discussion</p> <ul style="list-style-type: none"> • <i>Marcy Cohen, Research associate with the Canadian Centre for Policy Alternatives and Co-chair of the Community-Based Seniors Services (CBSS) Leadership Council for the United Way</i> • <i>Jennifer Johnstone, CE Central City Foundation</i> • <i>April Kyle, VP of Behavioral Health Services, Southcentral Foundation</i> • <i>Patrick Dicerri, Assistant Deputy Minister, Strategic Policy and Planning Ministry of Health and Long-term Care, Ontario</i>
14:25	<p>Next Steps <i>Plenary discussion</i></p>
15:20	<p>Closing of the conference and announcing the next conference in Brussels (2020) <i>Ian Boeckh, Graham Boeckh Foundation and Gerrit Rauws, King Baudouin Foundation</i></p>
15:30	<p><i>End of conference</i></p>