

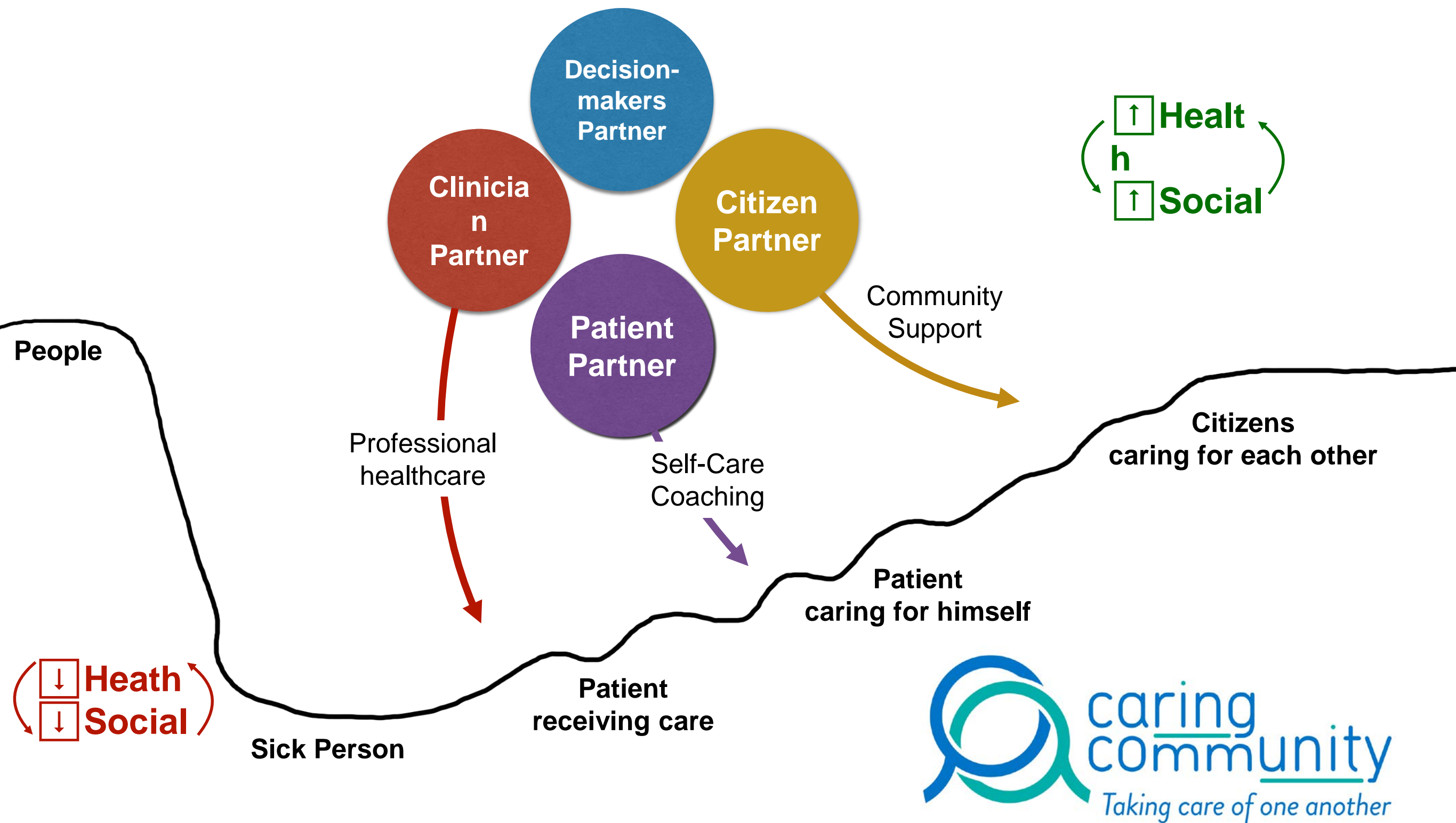


Antoine Boivin Canada Research Chair in Patient and Public Partnership  
Ghislaine Rouly Citizen Partner - Caring Community Project  
TRANSFORM conference, Vancouver, October 3rd 2019

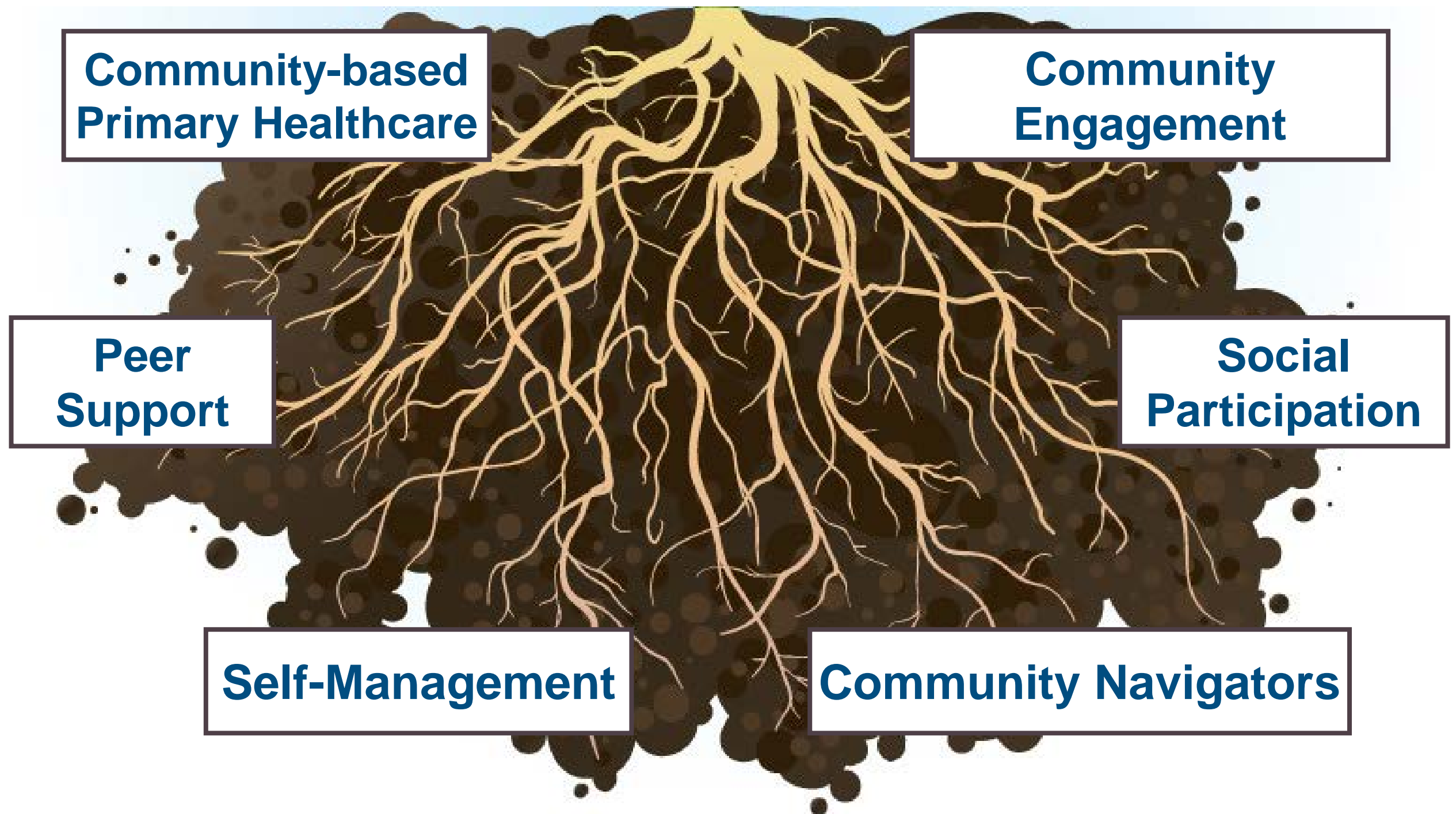
# Bridging Professional and Community Care

with Experienced Citizens





# Common Roots...



# Bringing Communities Across Silos





# Growing a Caring Community



# Contrasted reactions





# Evaluation

**A protected space for innovation**





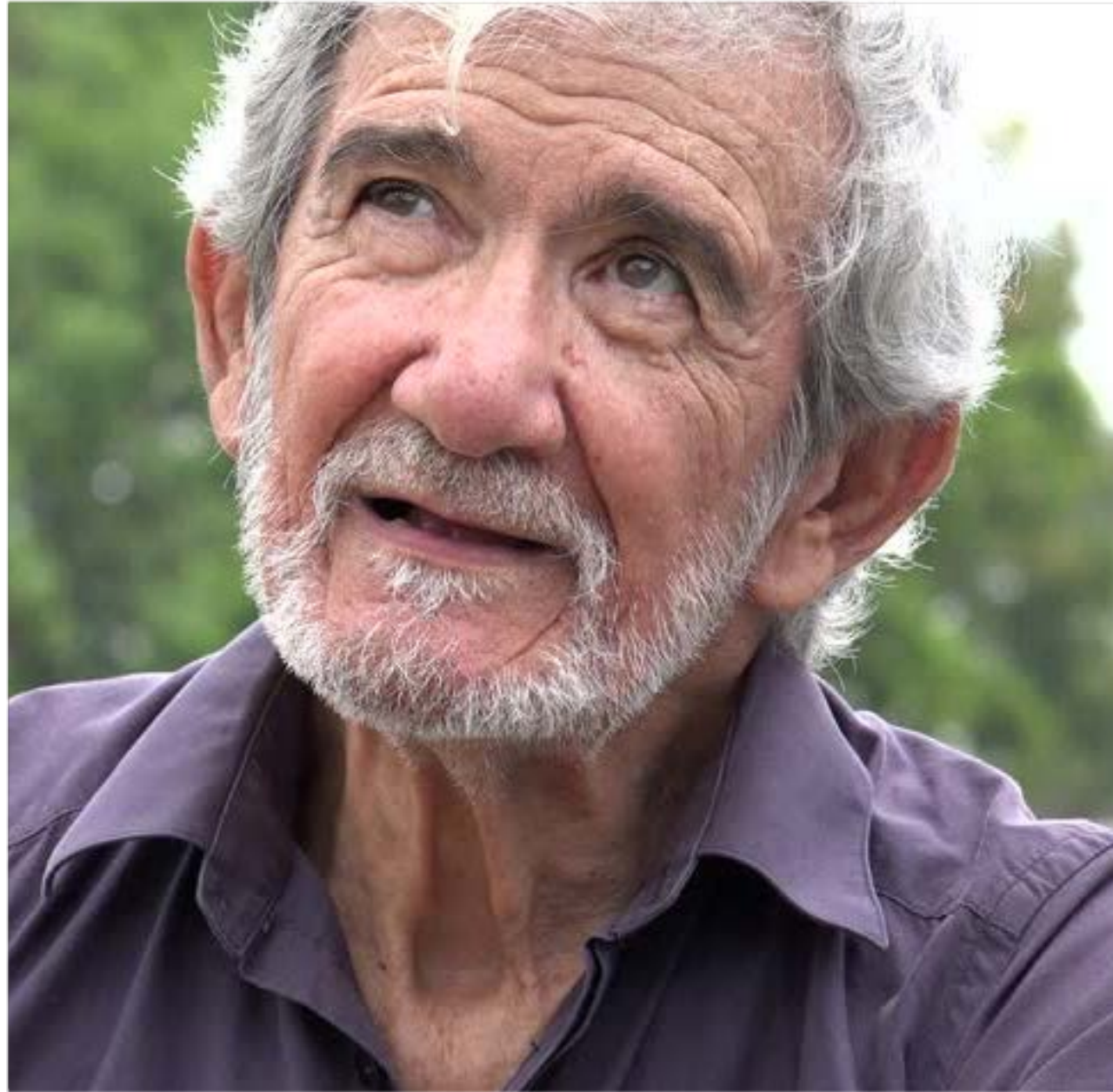
# Crossing the River Together

A lush green forest scene featuring a river with white-water rapids flowing over large, moss-covered rocks. In the background, a wooden bridge with railings spans the river, surrounded by dense foliage and trees.

“We cannot know our route before we set out. We cannot predict or control it. The only sensible way forward is to take one step at a time and learn as we go.”

-Adam Kahane

# **It Takes a Village** To Care for One Another







# Thank you!

[www.partnershipchair.ca](http://www.partnershipchair.ca)



# 3 Illustrative Models for Scaling Social Innovation

