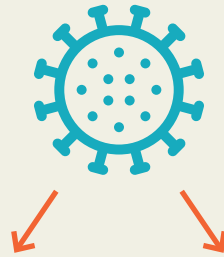


EXECUTIVE SUMMARY



**COVID IMPACT
ON THE WORLD**

**COVID IMPACT
ON ICC**

TRENDS AND CHALLENGES IN HEALTHCARE



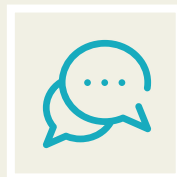
The rise of virtual care



Fragility of residential care



Pressures on Mental health



Changing health communications & policies



Community resilience



Recovering and dealing with the financial impact

“We are in the same storm, but not the same boat.”

“The disparity between so-called ‘haves’ and ‘haves not’ became even more apparent”

“Discuss universal basic services, not just income”

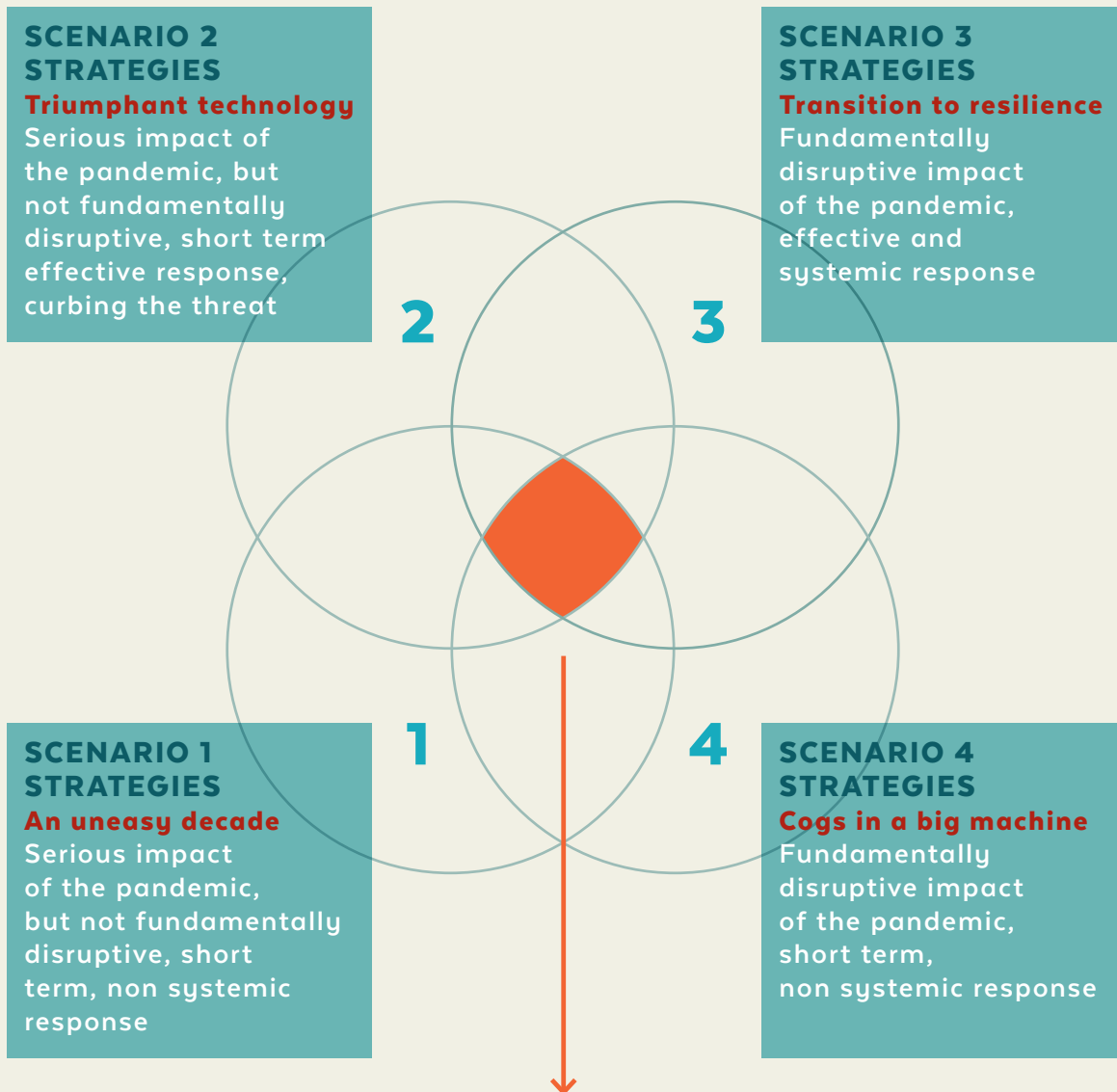


INTERVIEWS WITH ICC EXPERTS

“social inequalities are pushing people into vulnerability in all aspects of life, not only specifically health related”

“COVID has created an unprecedented chance to move forward with the agenda of ICC .”

The aim of the future ICC strategy should be to consciously participate in a major transformation, involving fundamental change in how to approach communities, their wellbeing, and healthcare systems.



FUTURE-ROBUST CORE STRATEGY FOR ICC

- **consolidate the gains** that have been made over the past years in developing and spreading ICC models and practices.
- **sustain local actors** in putting in place ICC-inspired practices and to strengthen community and solidarity.
- **invest in the development of novel**, alternative, community-driven, integrated health & care practices.
- **seek synergies with other societal transitions** that aim to revitalise democracy, build community resilience, increase quality of life, create opportunities for young people and empower vulnerable sections of the population in response to the impact of major political, technological and environmental trends.