

**WORKING
TOGETHER
TO ADVANCE
INTEGRATED
COMMUNITY
CARE:**

JOIN US!

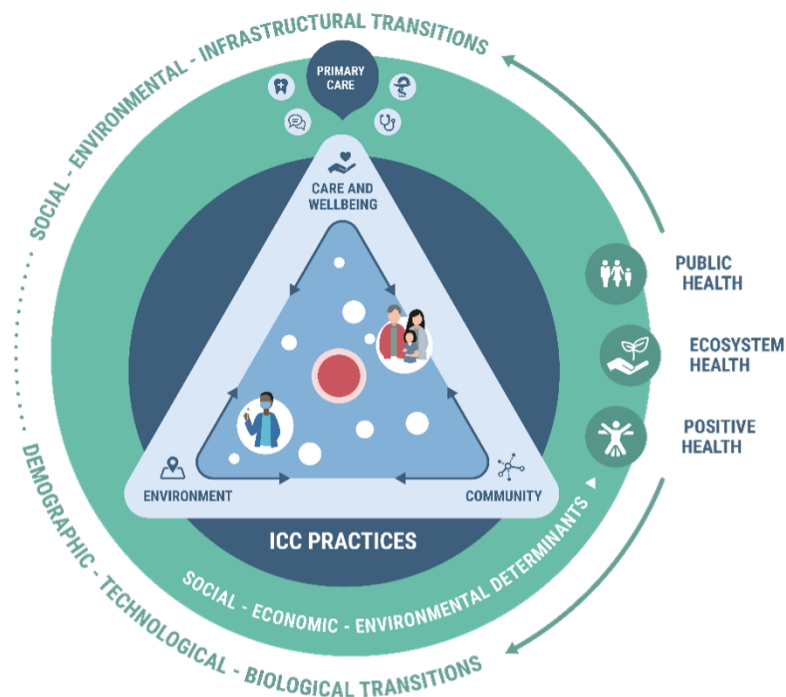


Transnational Forum on Integrated Community Care
<https://transform-integratedcommunitycare.com/>

INTEGRATED COMMUNITY CARE: IMPROVING QUALITY OF LIFE, SOCIAL COHESION AND HEALTH WITHIN LOCAL COMMUNITIES

Integrated community care (ICC) is both a set of guiding principles, and a movement towards better health and care systems. 'Better' means not only being more efficient in delivery, but also more effective in addressing the root causes of health deficits, and ultimately being more equitable and improving quality of life. ICC is neither a prescriptive model nor a managerial toolbox, but a systemic approach to enhancing the quality of life, social cohesion and resilience of a community. This means there is no single model for operationalizing ICC and it manifests in a range of practices that share a common core.

ICC recognizes local communities as essential partners in an effective health and care system that creates the conditions for people to care for themselves and for others. Communities contribute invaluable assets: relationships, expertise, contextual knowledge, entrepreneurship and innovation, public spaces and services, and locally supportive and responsive ecosystems. Integrated Community Care moves away from the framing of care delivery to deficient communities, and instead promotes a process of co-creation where local communities and individuals are the drivers. ICC is a whole-of-society approach to health and well-being that is determined by the needs and preferences of individuals and the communities in which they live.



INTEGRATED COMMUNITY CARE: A PATH TO COMMUNITY RESILIENCE

Despite the enormous strain that the COVID-19 crisis has placed on our communities and on our health and care systems, it has showcased the effectiveness of integrated community care principles in practice. Community-driven initiatives have been at the forefront of reaching and serving those most in need. In line with this thinking, integrated community care seeks to place people and communities at the centre of policy and decision-making on health and well-being, with special attention paid to vulnerable and marginalised groups. We have an unprecedented opportunity to drive progress and innovation in our health and care systems and to place integrated community care practices at the forefront of this transition.¹

TRANSFORM, THE TRANSNATIONAL FORUM ON INTEGRATED COMMUNITY CARE

TransForm, the Transnational Forum on Integrated Community Care, is a collaborative partnership of foundations from across Europe and Canada who share the vision of integrated, community-based care. In collaboration with its growing coalition of practitioners, researchers and advocates, TransForm has worked to put integrated community care on the health and care agenda, assembling national delegations of advocates from all disciplines and backgrounds to form a movement towards better community health and care. Through its analysis of ICC practices, approaches, and case studies, TransForm has produced a core strategy that encapsulates the vision of Integrated Community Care: **ICC4All: Seven Principles for Care**. As an international learning coalition, TransForm continues to explore how these principles manifest in existing and emerging practices across Europe and Canada that advance ICC.

In TransForm's first phase (2017-2021), the partnership achieved:

- **Field-building for ICC:** The organisation of three international **conferences** in Hamburg (2018), Turin (2019), and Vancouver (2019), and an expert workshop in Brussels (2019), bringing together policy makers, experts by experience, practitioners and researchers to share knowledge, exchange best practices and explore challenges and solutions in integrated community care.
- **Transnational knowledge-sharing & exchange:** Through conferences, site visits, and national field-building processes, TransForm developed over 30 **case studies and approaches** to integrated community care, which capture a diversity of promising practices that align with ICC's principles.

¹ See *TransForm's commissioned paper on building a COVID-19-robust strategy for ICC: THE IMPACT OF THE COVID-19 PANDEMIC ON INTEGRATED COMMUNITY CARE*, Marta Szulc & Philippe Vandenbroeck, ShiftN. https://transform-integratedcommunitycare.com/wp-content/uploads/2021/03/insights_FEB2021_DEF.pdf

- **Development of a common language and strategy for ICC:** In collaboration with its network of partners across Europe and Canada, TransForm developed a **strategic framework** for integrated community care through the ICC4All strategy and its seven effectiveness principles.

In 2020, the COVID-19 pandemic shook us all. Despite the enormous strain that the pandemic has placed on communities and on health and care systems, it has showcased the effectiveness of ICC principles in practice. Community-driven initiatives have been at the forefront of reaching and serving those most in need. In line with this thinking, integrated community care seeks to place people and communities at the centre of policy and decision-making on health and well-being, with special attention paid to vulnerable and marginalised groups. While the future remains uncertain, TransForm commissioned an **Insights Paper** that presents 4 future scenarios for how our society may respond to the pandemic and how ICC can help us to overcome challenges and address health and care needs in a post-COVID-19 world.

TRANSFORM'S OBJECTIVES & ACTIVITIES FOR ADVANCING INTEGRATED COMMUNITY CARE

In TransForm's second phase (2021-2024), TransForm has set the following objectives:

- **Strengthen the field of integrated community care** by developing a Changemakers Forum for ICC, where 15 initiatives will serve as a learning community and international advisory group to advance ICC priorities and address its challenges across Europe and Canada.
- **Grow the evidence base for ICC** by investing in the development of a principles-based evaluation framework for ICC's seven effectiveness principles and offering evaluation into ICC-aligned initiatives.
- **Seize opportunities for strategic communications and advocacy on ICC**, so that evidence on goal-oriented, place-based health and care systems is taken up by policy-makers at national and at EU level and is mainstreamed into primary care.
- **Expanding the TransForm coalition** through twinning exercises to engage diverse stakeholders, share knowledge, and identify promising practices in ICC across local and national contexts.

JOIN US IN LEADING PROGRESS AND INNOVATION THROUGH INTEGRATED COMMUNITY CARE

The TransForm partnership is looking to expand its international cohort of foundations from across Europe and Canada. By working together we:

- Leverage expertise, experience, and investment of foundation partners in order to have greater impact.
- Expand its core group of diverse funders that are spearheading local, national, and transnational initiatives in health and care equity.
- Connect the local to the international level, especially through advocacy, to ensure that ICC is at the forefront of an international policy and practice agenda.
- Keep the pulse on ICC beating and driving action.

Through the framing of integrated community care, we insist on the fundamental shift that is required in the way we value and understand the role of people and communities as an integral part of the system. TransForm builds upon the 2018 Astana Declaration, a new global commitment to provide primary health care for all, endorsed by all WHO Member States, and on the UN 2030 Agenda for Sustainable Development, which includes, among other key points, universal health coverage, equity, community participation and intersectoral collaboration. TransForm calls on all stakeholders and policymakers to work together for inclusive and sustainable solutions towards ‘ICC for all’.

TRANSFORM PARTNERSHIP: HOW WE WORK

TransForm is an initiative of six partner foundations from across Europe and Canada: Fondation de France, Compagnia di San Paolo, Robert Bosch Stiftung, Conconi Family Foundation, Graham Boeckh Foundation, the Dr. Daniël De Coninck Fund and King Baudouin Foundation, which is presently the Chair. This partnership works on the principle of collaboration and consensus, defining the vision, strategies and activities together as a group. With its second phase, In TransForm’s next phase, the partnership aims to build, mobilise and reinforce the field of ICC through strategic investments in practices, knowledge sharing, research and capacity strengthening (2021-2024).

TransForm: the Transnational Forum on Integrated Community Care is hosted by the Network of European Foundations in Brussels, Belgium. Get in touch!

peggy.sailer@nef-europe.org

Chair of the TransForm Steering Committee:

vandensande.t@kbs-frb.be